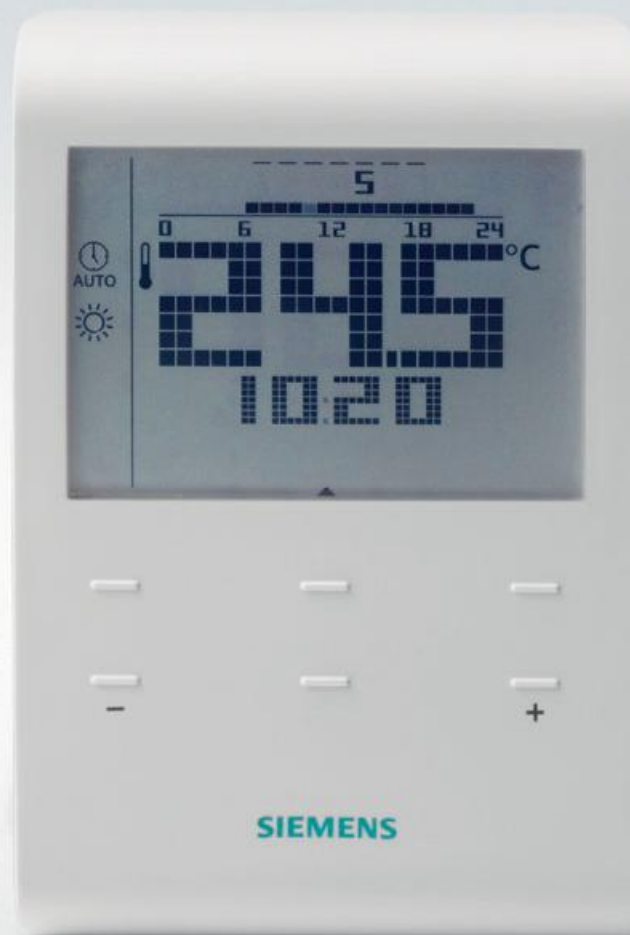


SIEMENS



Room thermostats for maximum energy efficiency and comfort

The new generation of room thermostats for heating applications offers ease of use and an attractive design.



Room thermostats – reliable products for energy-efficient heating

Room thermostats of Siemens ensure energy efficiently a comfortable room temperature. The new generation of RDD./RDE.. room thermostats features state-of-the-art touch technology, a slim design and superior ease of use. Capacitive buttons offer touch-based operation, and an intuitive menu makes it easy to set the desired room temperature as well as time programs.

Reliable, energy-efficient and easy to use

New room thermostats with intuitive touch control

The new generation of RDD../RDE.. room thermostats guarantees optimal room comfort, and their sleek and elegant design makes them perfect for any modern decor. Operation is simple, with capacitive buttons that need just a touch to enter the desired room temperature or adjust individual settings. In addition, the current room temperature is easy to read on the large LCD display.

The right temperature at the right time

Flexible and easy to customize, the room thermostats' time program maintains the right room temperature while lowering energy consumption and costs. This ensures that rooms are heated only when in use to avoid unnecessary energy consumption in unoccupied spaces.

Immediate use thanks to straight-forward installation

The room thermostats can be mounted directly to the wall and are compatible with all commercially available recessed conduit boxes. Whether wireless or wired, the devices are easy to install for immediate use.

Rely on an experienced partner

Siemens has been developing room thermostats for more than 70 years. Benefit from our proven application know-how and decades of experience.

Highlights

- Modern touch technology for ease of use
- Time programs heat rooms only when needed
- Easy installation and commissioning
- Years of experience and proven application know-how from Siemens



The RDD../RDE.. room thermostats feature state-of-the-art touch technology and a large LCD display for superior ease of use.



RDD100.1



RDE100.1RFS

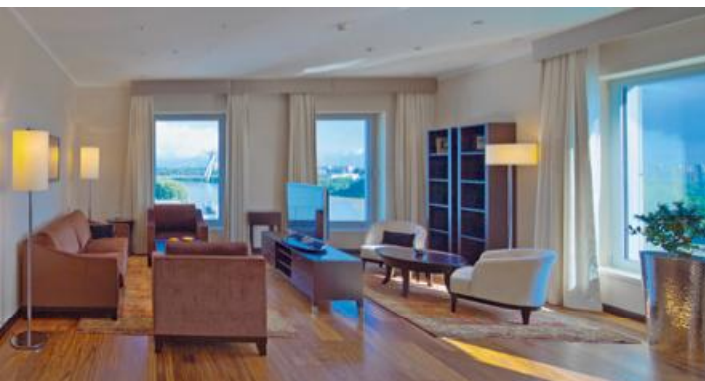
Energy-saving, modern, and multifunctional

The new electronic RDD../RDE.. room thermostats for heating applications offer enhanced energy-saving features and an elegant, sleek design.

Energy-saving functions for perfect efficiency

Energy-efficient heating, ease of use and quick installation – the new RDD../RDE.. room thermostats ensures comfort in every way. Time programs allow scheduled heating, thus avoiding unnecessary energy consumption when rooms are unoccupied. In addition, a maximum floor temperature ensures limited floor

heating, which not only protects floor coverings but also cuts down on energy use. Room thermostats with domestic hot water (DHW) control are also available. Battery-powered, AC 230 V wired, or wireless models ensure a wide range of applications. The practical memory backup keeps settings intact even in the event of power failure. Settings are also retained when batteries are replaced.



Optimal room comfort with the lowest possible energy consumption. Time and vacation programs allow for energy-efficient heating at the desired time.



RDE100.1 DHW

Achieving the right room temperature with maximum energy efficiency

To ensure the right room temperature at the right time, the room thermostats offer various time programs as well as a vacation program. This allows room temperatures to be preset for specific time periods. In hotels, room thermostats can be connected to key card readers to make sure rooms are heated only when occupied. This significantly reduces energy consumption and operating costs.

Contemporary product design with excellent user-friendliness

The elegant design of the new room thermostats blends harmoniously with any contemporary living or working envi-

ronment. The thermostats are slim and sleek and have an intuitive user interface featuring capacitive buttons. The large display makes everything easy to read. For use in public areas, the devices have a setpoint and operator lockout feature that reliably protects against tampering.

Simple, convenient operation

The new RDD../RDE.. room thermostats are fast and easy to install, configure and commission. The large openings on the mounting plate simplifying wiring. Simply attach the device to the mounting plate and it's ready to use. This allows you to quickly enter the desired settings and start energy-efficient heating right away.

Highlights

- Superior comfort with contemporary design and innovative touch technology
- Protection against tampering for use in public areas
- Wireless thermostat models for minimal installation effort
- Room thermostats for a broad range of heating applications



RCR100.1RF



RDE-MZ6

Easy installation, flexible use

Whether in residential or commercial buildings, the RDD../RDE.. wired and wireless room thermostats offer excellent flexibility and are up and running in no time.

Wireless models for even faster installation

The wireless models of the RDD../RDE.. range are even easier to install and commission. Because no wiring is required, all you need to do is put the thermostat in the desired location or mount it to the wall. The practical RCR.. and MZ6 wireless receivers allow flexible placement within the room. The multi-zone receiver can receive data from up to 6 thermostats, keeping the number of required products to a minimum and therewith reducing initial costs as well.

Room thermostats for a variety of applications

The new RDD../RDE.. room thermostats are designed for heating applications in residential and commercial buildings – from single-family and vacation homes to multi-family houses with individual heating systems to schools, hotels and offices with individual-room controls.

They are compatible with a wide range of heating systems:

- Thermal or zone valves
- Gas or oil boilers
- Vans
- Pumps
- Floor heating
- Radiation and convection heating

RDD../RDE.. product overview – standalone						
Type	AC 230 V	Batteries (AAA)	Time program	Control	Output	Domestic hot water (DHW)
RDE100	■			2-position	On/Off	
RDD100.1		■		2-position	On/Off	
RDD100.1DHW		■		2-position	On/Off	■
RDE100	■		■	2-position	On/Off	
RDE100.1		■	■	2-position	On/Off	
RDE100.1DHW		■	■	2-position	On/Off	■

RDD../RDE.. product overview – wireless						
Type	AC 230 V	Batteries (AAA)	Time program	Control	Output	Available as
RDD100.1RFS*	■	■		2-position	On/Off	Set
RDD100.1RF		■				Standalone
RDE100.1RFS*	■	■	■	2-position	On/Off	Set
RDE-MZ6	■			2-position	On/Off	Standalone
RDE100.1RF*		■	■			Standalone
RDE100FP	■		■		Triac	Standalone
RDE100.1FPRFS*	■	■	■		Triac	Set
RCR100FPRF**	■				Triac	Standalone

* AC 230 V receiver, transmitter with batteries

** Optional additional "Fil Pilote" receiver for RDE100.1FPRFS, if required

Siemens Switzerland Ltd
Infrastructure & Cities Sector
Building Technologies Division
International Headquarters
Gubelstrasse 22
6301 Zug
Switzerland
Tel +41 41 724 24 24

Siemens Building Technologies
Infrastructure & Cities Sector
Brunel House
Sir William Siemens Square, Frimley
Camberley
Surrey, GU16 8QD
United Kingdom
Tel +44 1276 696000

Siemens Ltd
Infrastructure & Cities Sector
Building Technologies Division
22/F, AIA Kowloon Tower, Landmark East
100 How Ming Street
Kwun Tong, Hong Kong
Tel +852 2870 7888

The information in this document contains general descriptions of technical options available, which do not always have to be present in individual cases. The required features should therefore be specified in each individual case at the time of closing the contract.

© Siemens Switzerland Ltd, 2013 • BT_0023_EN

Answers for infrastructure and cities.

Our world is undergoing changes that force us to think in new ways: demographic change, urbanization, global warming and resource shortages. Maximum efficiency has top priority – and not only where energy is concerned. In addition, we need to increase comfort for the well-being of users. Also, our need for safety and security is constantly growing. For our customers, success is defined by how well they manage these challenges. Siemens has the answers.

“We are the trusted technology partner for energy-efficient, safe and secure buildings and infrastructure.”